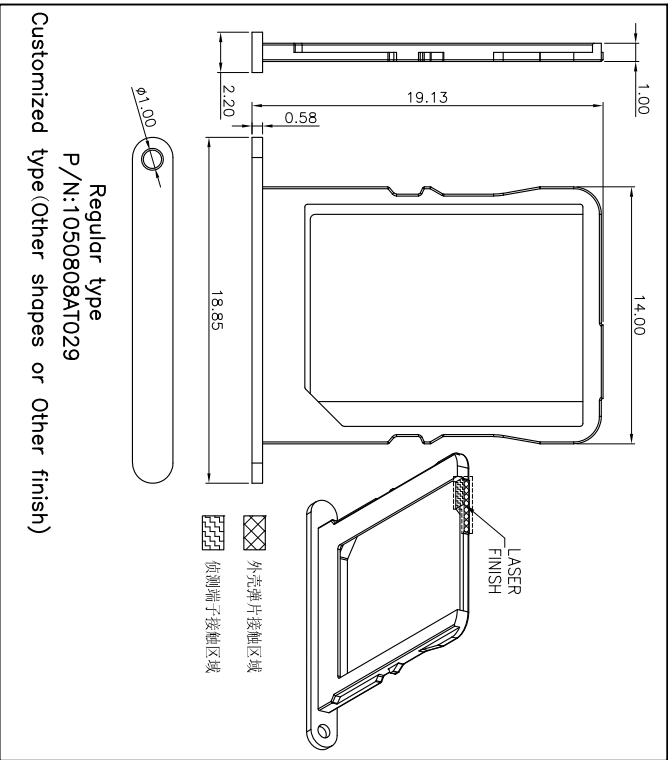
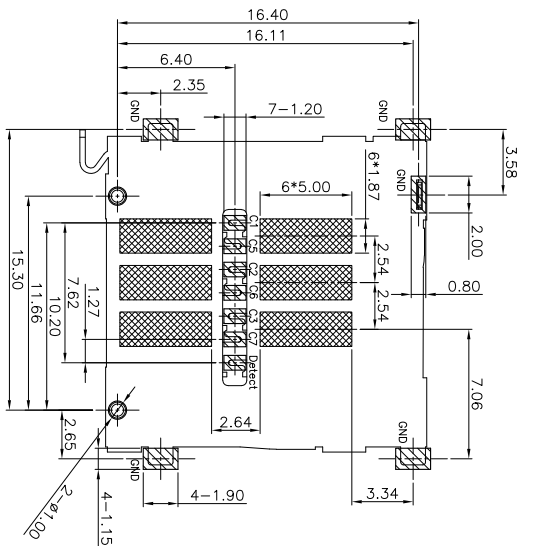
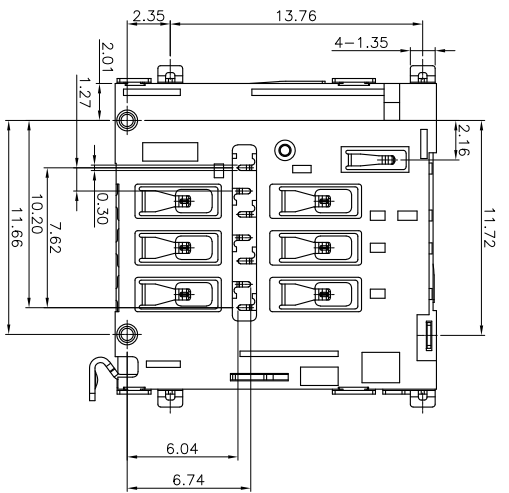
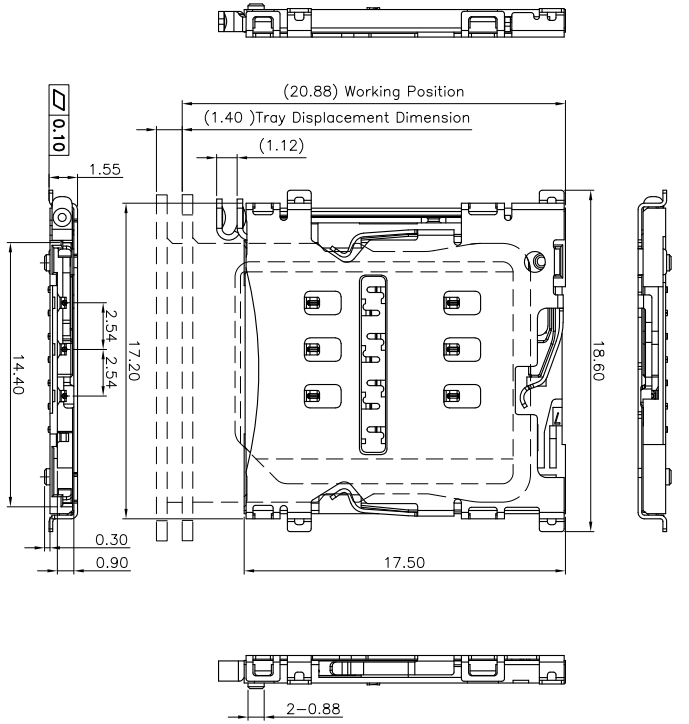


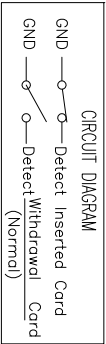
THIS INFORMATION IS CONFIDENTIAL AND IS DISCLOSED TO YOU ON CONDITION THAT NO FURTHER DISCLOSURE IS MADE BY YOU TO OTHER THAN TETULL PERSONNEL WITHOUT WRITTEN AUTHORIZATION FROM TETULL LTD.



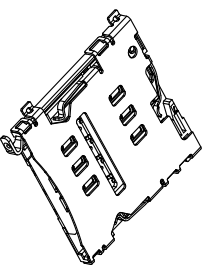
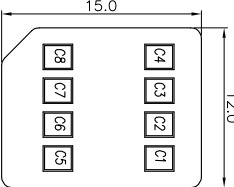
Regular type
P/N:1050808AT029
Customized type(Other shapes or Other finish)

外壳薄片接触区域
检测端子接触区域

- NOTE:
- ELECTRICAL CHARACTERISTICS
 - 1-1. VOLTAGE RATING: 10V DC.
 - 1-2. CURRENT RATING: 0.5 A.
 - 1-3. CONTACT RESISTANCE: 50 milliohms MAX.
 - 1-4. INSULATION RESISTANCE: 1000 Megohms MIN.
 - 1-5. DIELECTRIC WITHSTANDING VOLTAGE: 500V AC FOR 1 MINUTE.
 - MECHANICAL CHARACTERISTICS
 - 2-1. CONTACT NORMAL FORCE:0.3~0.9N CONTACT.
 - 2-2. DURABILITY:5000 CYCLES.
 - 3. SALT SPRAY: 24H.
 - 4. OPERATING TEMPERATURE:-40°C~85°C.
 - 5. ROHS 2002/95/EC COMPLIANT.
 - 6. MPQ : 1200PCS/REEL.



SIM Pin Assignment	Name
C1	VCC
C2	RST
C3	CLK
C4	RESERVED
C5	GND
C6	VPP
C7	I/O
C8	RESERVED



Keep Out Area
Solder Area
RECOMMENDED PCB LAYOUT
GENERAL TOLERANCE ±0.05

NO	DESCRIPTION	QTY	MATERIAL	TITLE: MICRO SIM CARD 6P 1.5H WITH DETECT PIN
E	CAM	1	STAINLESS STEEL	
D	LEVER	1	STAINLESS STEEL	
C	SHELL	1	STAINLESS STEEL	
B	CONTACT	7	COPPER ALLOY	G/F plated on contact area G/F plated on Solder tail Nickel Under plated Overall.
A	HOUSING	1	THERMOPLASTICS	BLACK
PLATING & COLOR				

DECIMALS:	ANGLES:
X : ±0.5	X : ±2°
X.X : ±0.3	X.X : ±1'
X.XX : ±0.2	



PART NO.	DWN	CHKD	APVD	SCALE 1:1	UNIT: mm	SHEET: 10F1	REV. A
10506234R001	BROKEN						

REV/ECN NO	OR DESCRIPTION	REVISED	DATE
A	PRODUCT RELEASE	BROKEN	2022.03.13