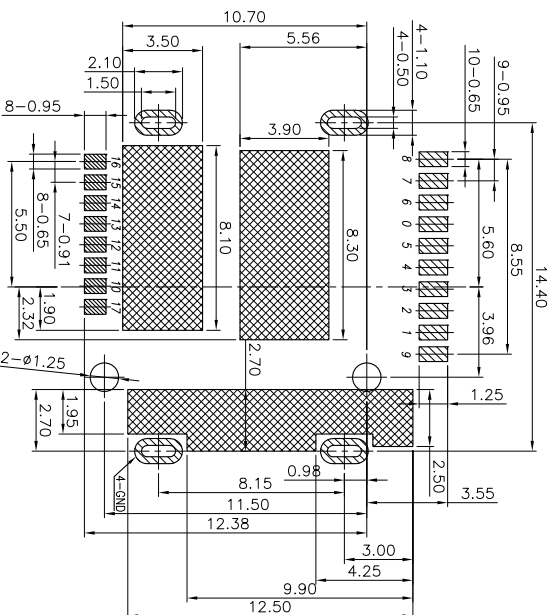
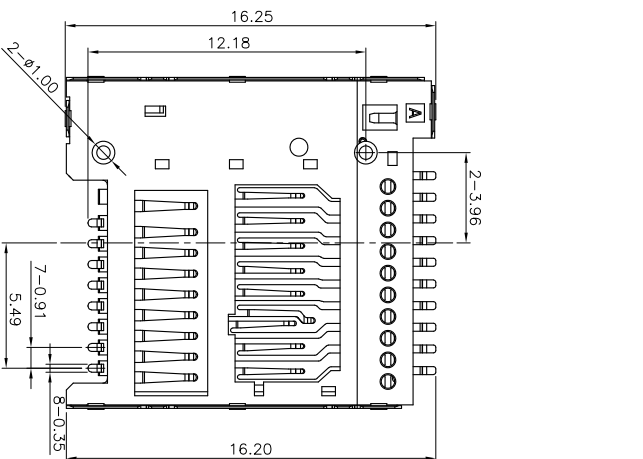
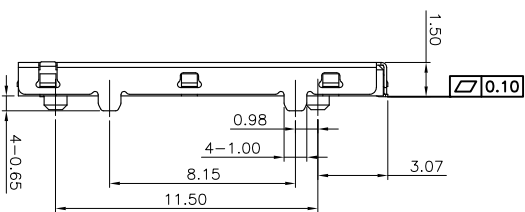
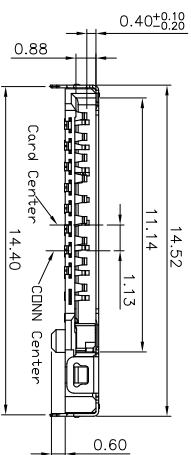
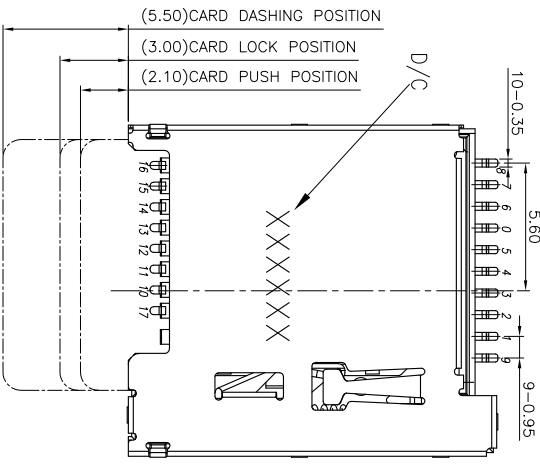
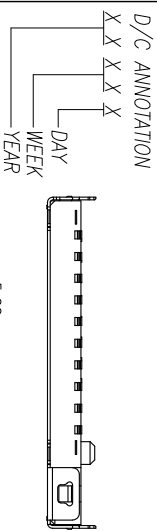


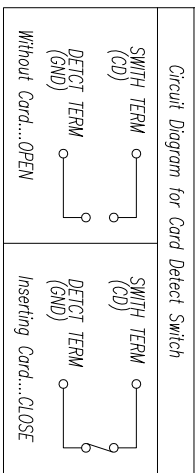
THIS INFORMATION IS CONFIDENTIAL AND IS DISCLOSED TO YOU ON CONDITION THAT NO FURTHER DISCLOSURE IS MADE BY YOU TO OTHER THAN TETULL PERSONNEL WITHOUT WRITTEN AUTHORIZATION FROM TETULL LTD.



RECOMMEND PCB LAYOUT  
(TOLERANCE:±0.05)

▨ Solder Area  
▨ Keep Out Area  
▨ Component Outline

TE4.0 Card Pin NO.	Name	Type	Description
P9	VDD2	S	Supply voltage(1.8V)
P1	DATA2	I/O	Data Line[Bit 2]
P2	CD/DATA3	I/O	Card Detect/Data Line[Bit 3]
P3	CMD	I/O	Command/Response
P4	VDD1	S	Supply voltage(3.3V)
P5	CLK	I	Clock
P0	CD	S	Supply voltage ground
P6	VSS	S	Supply voltage ground
P7	DATO/RCLK+	I/O	Data Line[Bit 0]/RCLK+
P8	DATI/RCLK-	I/O	Data Line[Bit 0]/RCLK-
P17	SWIO	I	Single Wire Protocol Interface
P10	VSS	S	Supply voltage ground
P11	DO+	I/O	UHS-II DO+
P12	DO-	I/O	UHS-II DO-
P13	VSS	S	Supply voltage ground
P14	D1-	I/O	UHS-II D0-
P15	D1+	I/O	UHS-II D0+
P16	VSS	S	Supply voltage ground
GND		GROUND	Supply voltage ground



REV/ECN NO	OR DESCRIPTION	REVISED	DATE
A	PRODUCT RELEASE	ZHARKO	2020.02.14

NOTE:

- ELECTRICAL CHARACTERISTICS
  - 1-1. VOLTAGE RATING: 10V DC.
  - 1-2. CURRENT RATING: 0.5 A.
  - 1-3. CONTACT RESISTANCE: 80 milliohms MAX.
  - 1-4. INSULATION RESISTANCE: 1000 Megohms MIN.
  - 1-5. DIELECTRIC WITHSTANDING VOLTAGE: 500V AC FOR 1 MINUTE.
- MECHANICAL CHARACTERISTICS
  - 2-1. CONTACT NORMAL FORCE:0.3~0.9N CONTACT.
  - 2-2. DURABILITY:5000 CYCLES.
  - 3. SALT SPRAY: 24H.
  - 4. OPERATING TEMPERATURE:-40°C~85°C.
  - 5. ROHS 2011/65/EU COMPLIANT.
  - 6. MPQ : 800PCS/REEL.



TETULL CORPORATION

A B C D E F

1 2 3 4 5 6 7 8