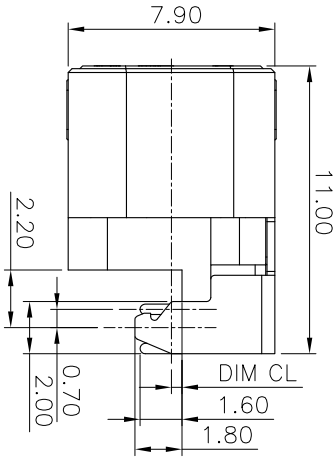
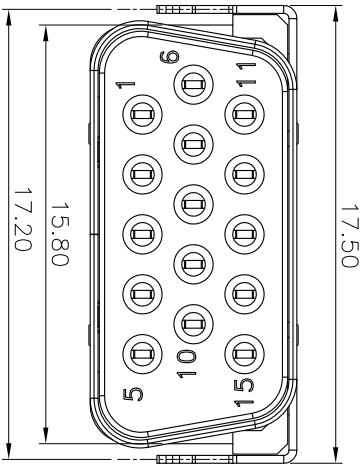
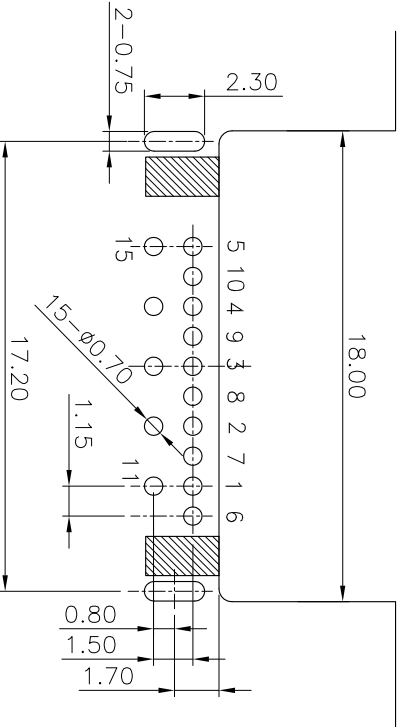
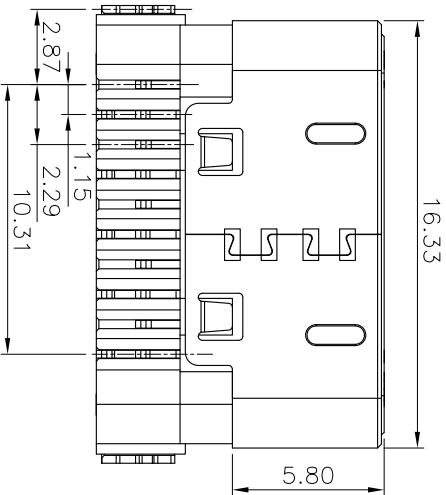
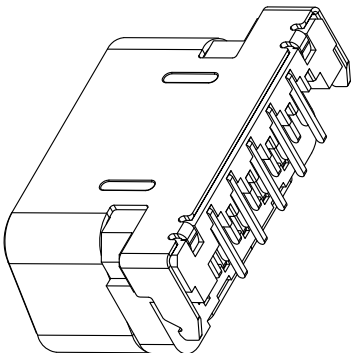


THIS INFORMATION IS CONFIDENTIAL AND IS DISCLOSED TO YOU ON CONDITION THAT NO FURTHER DISCLOSURE IS MADE BY YOU TO OTHER THAN TETULL PERSONNEL WITHOUT WRITTEN AUTHORIZATION FROM TETULL LTD.



P/N NO.	DIM CL
1191512AT003	-1.2
1191512AT002	-1.0
1191512AT001	-0.4
1191512AT004	0
1191512AT005	0.4
1191512AT006	1.0
1191512AT007	1.2

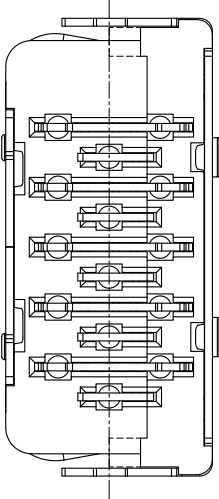


RECOMMENDED P.C.B. LAYOUT
TOLERANCE UNSPECIFIED $\pm 0.05\text{mm}$

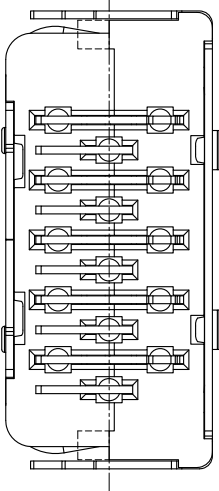
SPECIFICATIONS:

- 1.ELECTRICAL CHARACTERISTICS:
 - 1.1 Insulation Resistance:1000M Ω Min
 - 1.2 Contact Resistance:40m Ω Max
 - 1.3 Dielectric Withstanding Voltage:500V AC
 - 1.4 OPERATING TEMPERATURE:-40°C ~ 85°C
2. MECHANICAL CHARACTERISTICS:
 - 2.1 MATING FORCE:45N Max
 - 2.2 UNMATED FORCE:4.5N Min
 - 2.3 DURABILITY:5,000 CYCLES
- 3.ENVIRONMENTAL
TEMPERATURE RANGE -40°C ~ +85°C

CL -1.2~0



CL 0~1.20



REV.	ECN NO OR DESCRIPTION	REVISED	DATE
A	PRODUCT RELEASE	JAMES	2013.03.06

C	SHELL	1	SPCC 0.30t	Ni PLATING
B	CONTACT	15	COPPER ALLOY 0.30t	Gold Flash On Contact Area Tin plated on Solder tail All over Nickel Plated .
A	HOUSING	1	HIGH-TEMPERATURE PLASTIC U94-10	BLACK
NO	DESCRIPTION	QTY	MATERIAL	PLATING & COLOR
UNLESS OTHERWISE SPECIFIED TOLERANCES				
DECIMALS: ANGLES:				
X.XX : ± 0.2 X.XX : ± 0.3 X.XX : ± 0.5 X.XX : $\pm 1^\circ$ X.XX : $\pm 2^\circ$				
TITLE: VGA 15P/F 短体反向 沉板式 (超薄)				
PART NO. 1191512AT00X				
DWG JAMES 2013.03.06				
CHKD				
APVD				
SCALE 1:1 UNIT: mm				
CUSTOMER COPY SIZE: A4 SHEET: 10F1 REV: A				

